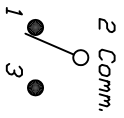
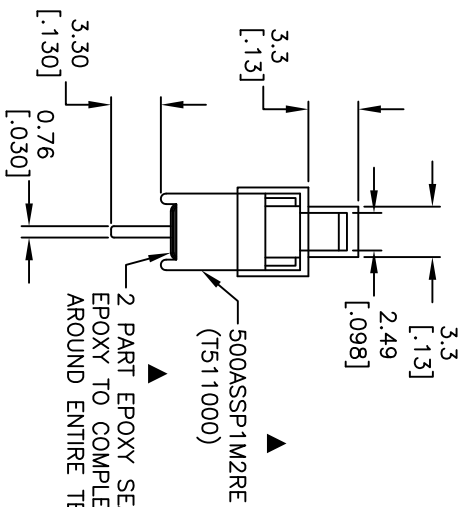
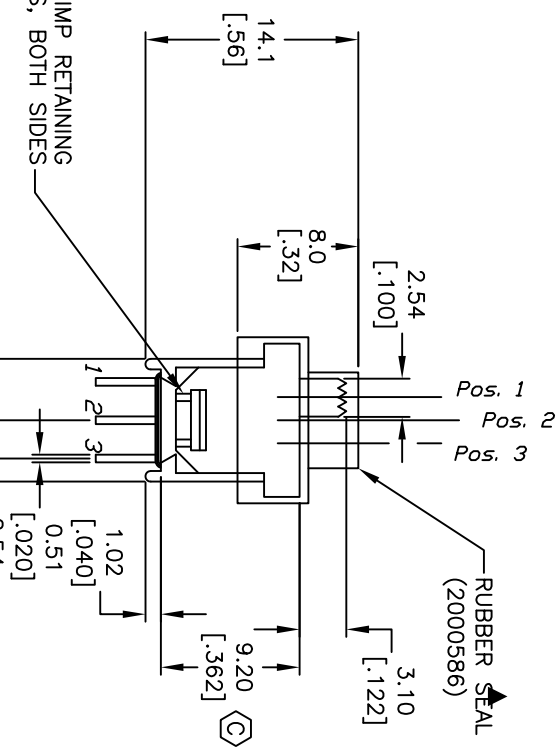
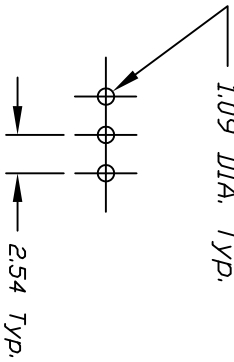


RECOMMEND P.C.B. LAYOUT



CIRCUIT: SPDT

CONTACT CONFIGURATION

SWITCH FUNCTION		
PDS. 1	PDS. 2	PDS. 3
DN	NONE	DN
2-1	OPEN	2-3

- NOTES:
1. ALL DIMENSIONS IN MM  
X.XX=±0.25
  2. GENERAL TOLERANCE: X.X=±0.4
  3. TERM. NOS. FOR REFERENCE ONLY.
  4. RATING: 0.4 VA MAX. @20 VAC OR DC MAX.
  5. CRIMP METAL RETAINING BRACKET.  $\diamond$
  6.  $\blacktriangle$  DENOTES CRITICAL PARAMETER.  $\diamond$

REV.	ECN No.	DESCRIPTION	DATE	CHKD
E	21104	ADDED BOOT DIMENSIONS	4/15/13	EBP
D	14947	ADDED CRIMP TO BRACKET	5/26/05	JB
C	14081	CHANGE HEIGHT OF BODY	6/9/04	AR
B	14064	CHANGE WORDING OF EPOXY NOTE	6/3/04	AR
A	13839	RELEASED FOR PRODUCTION	3/16/04	AR

THE INFORMATION CONTAINED IN THIS DOCUMENT IS PROPRIETARY TO E-SWITCH AND IS NOT TO BE COPIED OR TRANSMITTED

**E-SWITCH**

TITLE: 500ASSP1M2RE W/RUBBER BOOT

SCALE: 2:1

DATE: 7/5/02

DR: RC

DWG: XT0123P

REV: E